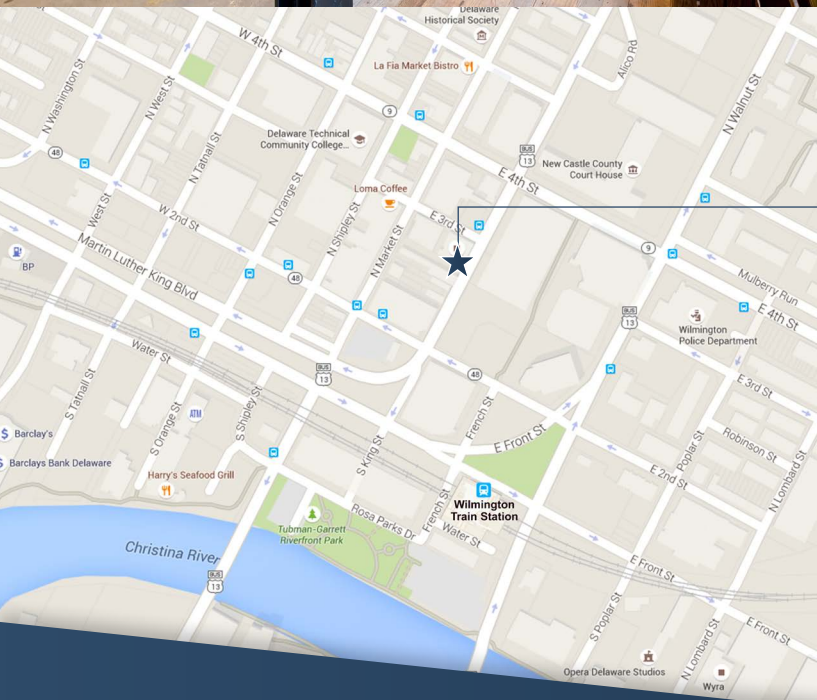
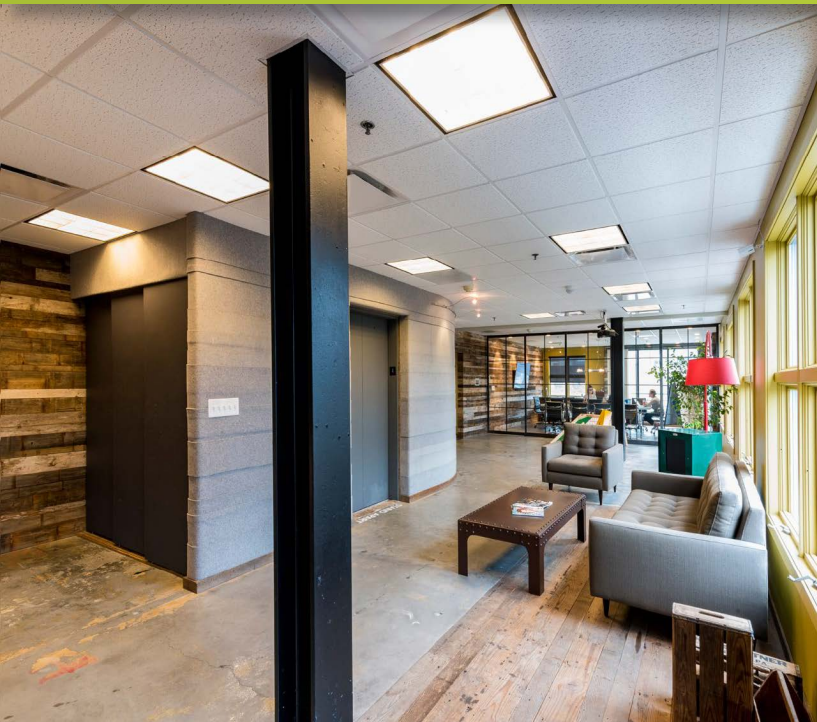


AVAILABLE

233 KING STREET, WILMINGTON, DE 19801



233
KING STREET

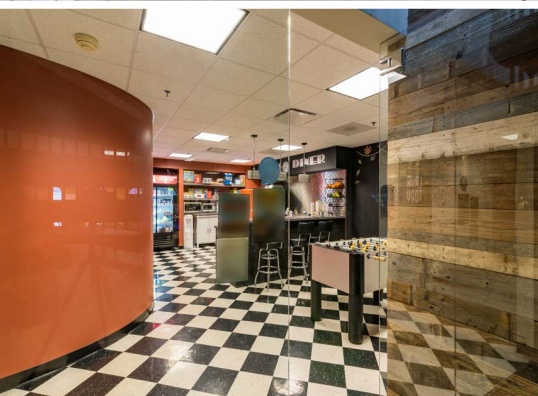
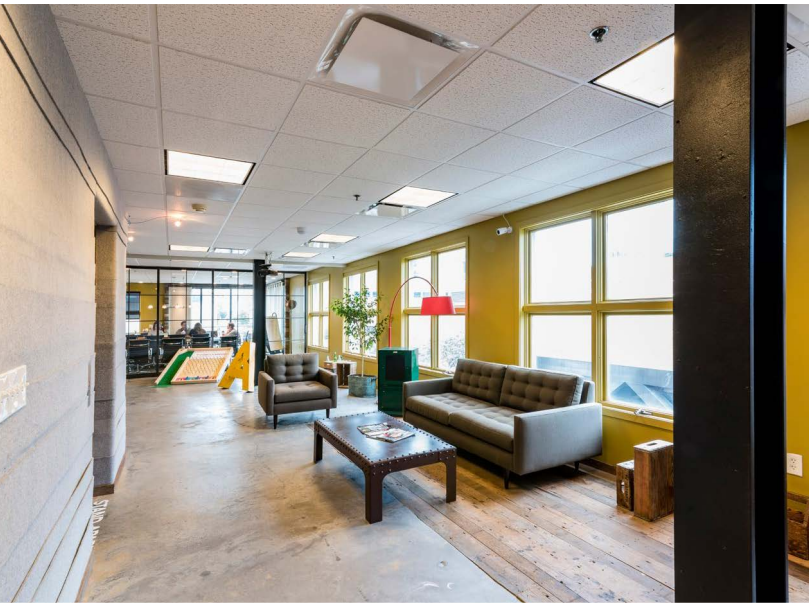
Location:

233 N. King Street
Wilmington, DE 19801



For more information please contact:
Jeffrey Gannett | 302.691.4067 | jgannett@virtusrea.com

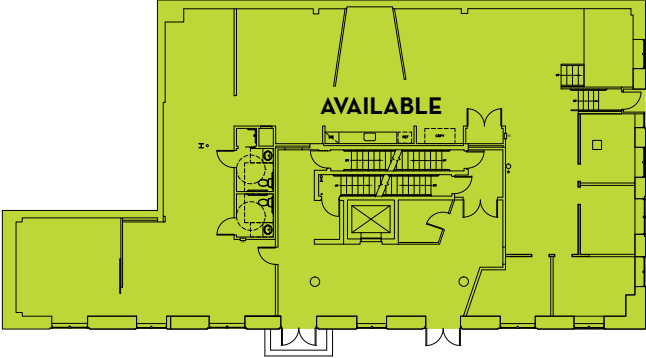
BUILDING AMENITIES



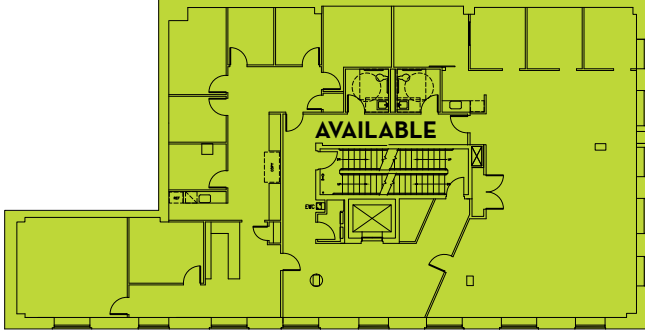
Property highlights

- 2,500 - 19,700 +/- SF available
- \$24.00 per SF plus electric
- Floor sizes
 - 1st - 4,417 RSF
 - 2nd - 5,177 RSF
 - ~~3rd - 5,187 RSF~~ **LEASED**
 - ~~4th - 4,949 RSF~~ **LEASED**
- Convenient downtown Wilmington location across from the Court House
- One block to Wilmington Train Station
- Adjacent to Wilmington Riverfront and Ships Tavern District
- Easy access to I-95
- Open floor plan
- Available 8/1/17
- 26 on-site parking spaces

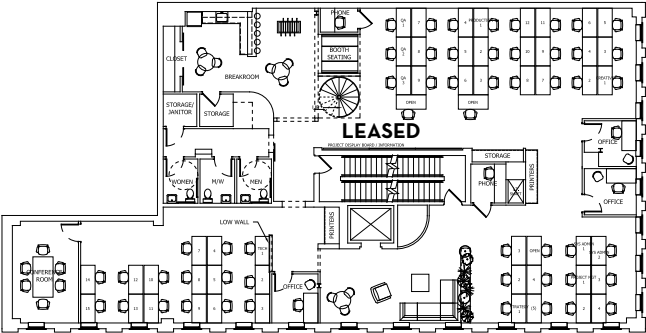
THE PREMISES



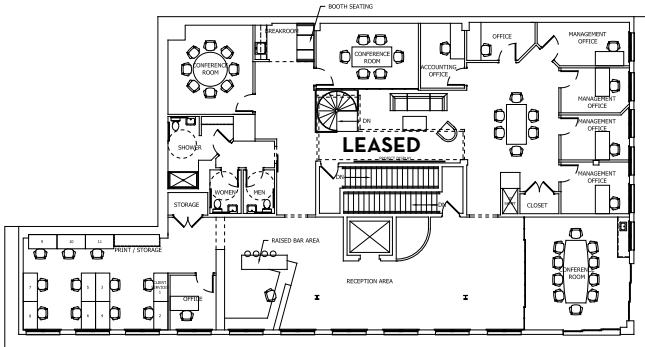
FIRST FLOOR - AVAILABLE
4,417 RSF



SECOND FLOOR - AVAILABLE
5,177 RSF



THIRD FLOOR - LEASED
5,187 RSF



FOURTH FLOOR - LEASED
4,949 RSF



